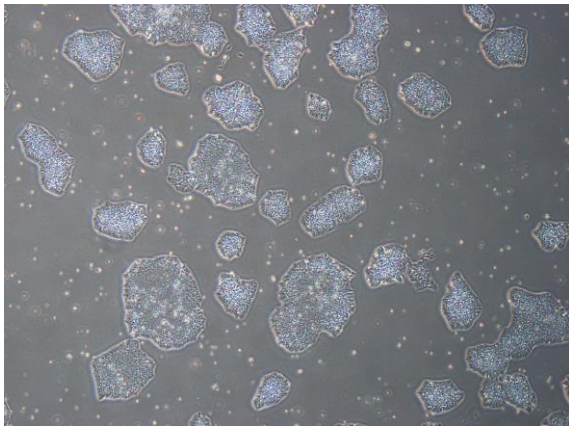
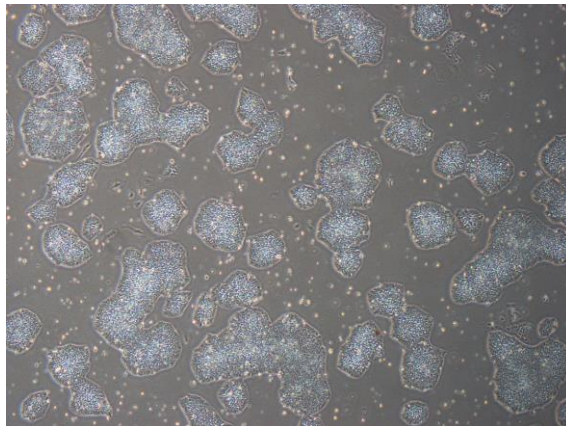


【 CiRA-j-1123 】 Morphology of iPSC colonies

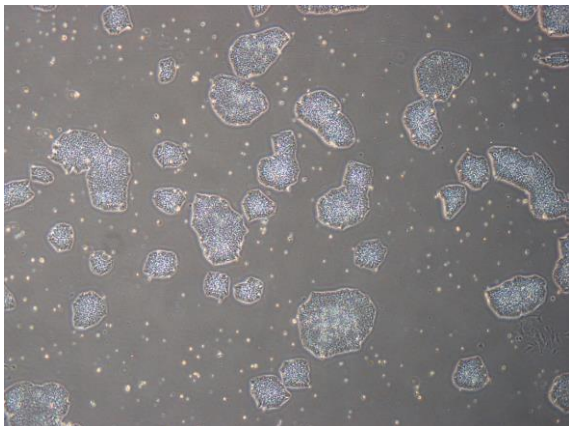
CiRA-j-1123-A: passage-3



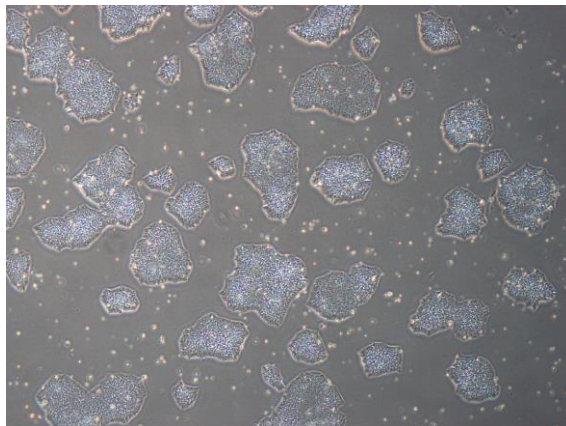
CiRA-j-1123-B: passage-3



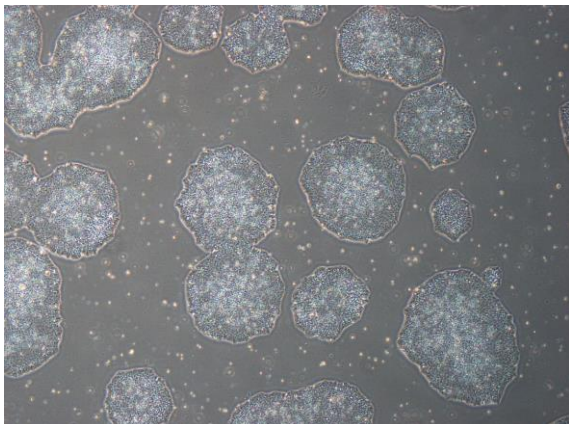
CiRA-j-1123-C: passage-3



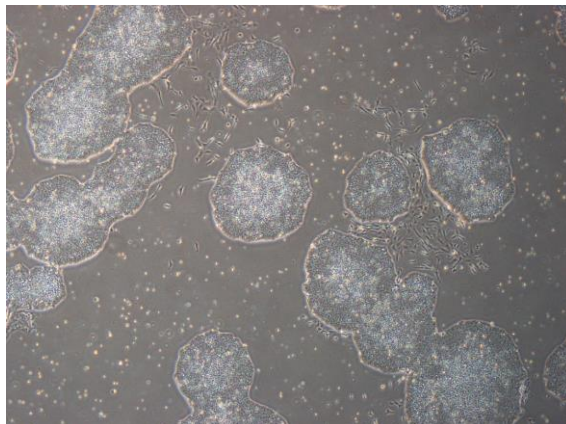
CiRA-j-1123-D: passage-3



CiRA-j-1123-E: passage-3



CiRA-j-1123-F: passage-3



(All images were captured at 4x magnification)